

From the Pastor's Desk...

December Worship Schedule:

December 3rd

~ 1st Sunday of Advent

8:45 a.m. Adult Bible Study

10:00 a.m. Worship with
Communion

*"Heralds of Hope" – Part 1 of
Sermon Series: Defining Advent
Jeremiah 29:11*

following service:

Home Communion

Visitation team departs

December 10th

~ 2nd Sunday of Advent

8:45 a.m. Adult Bible Study –
McKee Room

10:00 a.m. Worship

*"Unexpectedly Peaceful"
– Part 2 of Sermon Series:
Defining Advent
Matthew 1:18-25*

following service:

Christmas Dinner

~ Social Room

December 17th

~ 3rd Sunday of Advent

Lessons & Carols

8:45 a.m. Adult Bible Study –
McKee Room

10:00 a.m. Worship

"Sing Joy to the Lord"

*– Part 3 of Sermon Series:
Defining Advent*

December 24th

~ 4th Sunday of Advent

Christmas Eve

8:45 a.m. Adult Bible Study –
McKee Room

10:00 a.m. Worship

"God So Loved"

*– Part 3 of Sermon Series:
Defining Advent
Titus 2:11*

Candlelight Service

7:00 p.m.

"Extreme Makeover"

2 Corinthians 5:17

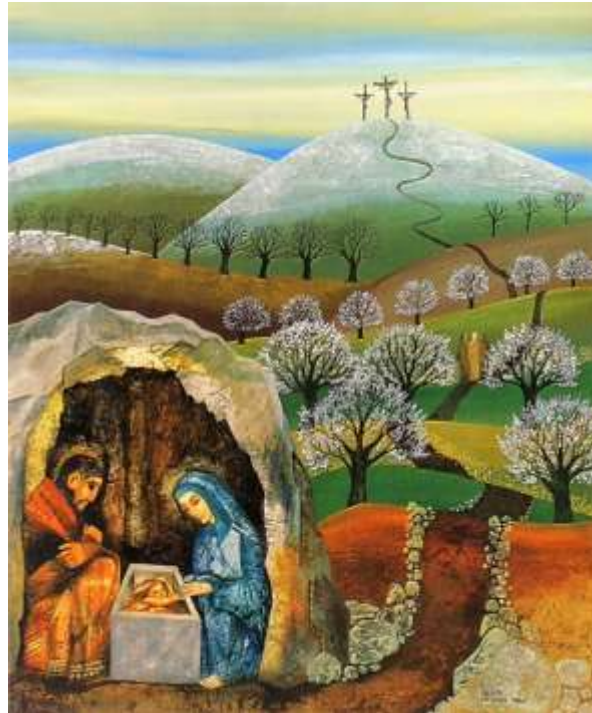
December 31st

~ New Year's Eve

10:00 a.m. Worship

"A New Year's Look"

Revelation 21:5



"The Manger and the Cross"- Beate Heinen (1986)

A few years ago I was given a copy of this very portrait by a member of the church I served at that time. Just the other day, as I have every Advent season, I rummaged through a couple files of "stuff" and pulled the picture out. As I sat in my office I thought about the depth of the Christian faith so vividly portrayed.

The manger and the cross are not far removed. We tend to picture the Nativity as a pleasing, sweet scene with admiring parents and grateful shepherds. We tend to view Golgotha as a horrid, ugly hill surrounded by hate-filled opposers of the glorious majesty of God. But often we fail to recognize, to connect, that the Cross was planted in Bethlehem.

A Savior was born that day to die for our sins—the shadow of the Cross falls over the baby Jesus as he rests in the manger. Our redeemer was born that day in Bethlehem. The Cross and the manger meet in Bethlehem.

God's compassion for us is all the more wonderful because Christ died not for the righteous or the holy but for the wicked and the sinful, and, though the divine nature could not be touched by the sting of death, he took to himself, through his birth as one of us, something he could offer on our behalf.

In this Child, in fact, God's love is manifested: God becomes a defenseless Child to conquer man's pride, violence, and desire to possess. In Jesus, God took up this poor and defenseless condition to conquer with love and lead us to our true identity. And it all started in the manger!

Grace and Peace,
Pastor John



Dec. 10, 2017 – 10:00 a.m.
2nd Sunday of Advent Worship
Christmas Luncheon to follow

Dec. 17, 2017 – 10:00 a.m.
Lessons & Carols

Dec. 24, 2017 – 10:00 a.m.
Christmas Eve Day Worship

Dec. 24, 2017 – 7:00 p.m.
Christmas Eve Candlelight Service

Dec. 31, 2017 – 10:00 a.m.
New Year's Eve Day Worship

Sunday School Class in the McKee room continues...

Adult Bible Study

Adult Bible Study meets in the McKee Room every Sunday morning at 8:45 a.m.

WE HAVE ROOM FOR YOU!

If you have any questions, please see Janice Curry.



PW Holiday Gathering

Wednesday
Dec, 6th
Noon
in our
Social Room



PW United Circle

Everyone is invited to the PW December Gathering on Wednesday, Dec. 6th at noon (no Bible Study this month). After the Christmas luncheon, the program will be a speaker from the Blackburn Center Against Domestic and Sexual Violence. As a mission focus, we are asking for donations of New Pajama sets: winter-weight; women-all sizes, Children's sizes: girls – sizes 5, 6, 8, 10, 12, 14; boys – sizes 4-5; infants – gender neutral. These will be given to the Blackburn Center for clients at their shelter.

PW Mitten Trees

The mitten trees are ready for your donations of winter apparel – mittens, gloves, scarves, and hats for children and adults. The 2 trees are in the social room. Help those in need to keep warm this winter season.

PW Poinsettias

These will be displayed during the worship service on Sunday, December 10. Afterwards, they will be delivered to members and friends of the congregation who are shut-in, ill, or over 90 years of age to brighten their Christmas.

Holiday Food Baskets

These will be prepared at the Lions Club for the 115 local families in need. PW thanks the congregation for their donations of mac and cheese and scalloped potatoes. Judy Lash is coordinating this collection and will purchase the amount needed to complete our donation.



Thank Offering Sunday

November 19th, the Presbyterian Women held its annual Thank Offering collection. The Presbyterian Women want to thank everyone who generously donated to the special projects which will be funded locally and internationally. The total offering this year was \$436.

Shoe Collection

Redstone PW will collect good reusable shoes into 2018 to raise money for the Rise Against Hunger meal-packing event planned for Oct. 2018. Shoes are accepted in all sizes. **No flip-flops, crocs, slippers, winter boots, dress boots, or metal cleats.** Deposit boxes are placed inside the 3rd Street door.

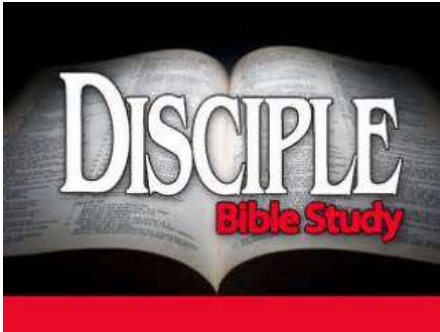


Decking the Halls

Thanks to the people who stayed after service on Nov. 19 to decorate the church for Christmas. Under Ben Markle's great organization, everything went smoothly and looks wonderful.

Christmas Cantata

The Chancel Choir will present the cantata, "Born a King" in service on Dec. 17.

BIBLE STUDY CLASS**Disciple Bible Study**

Wednesdays at 6:00 p.m.

The beginning of December, we will be finishing the topic of Christian Character. The Bible has a lot to say on this subject in both testaments. We are also looking at people in the Bible as examples of both good and bad Christian Character.

Dec. 6th – Christian Character - Patience

James 1:1-4

Dec. 13th – Christian Character - Reputation

Philemon 1-25

We will look at the well-known Christmas story from Luke's gospel through the eyes of the shepherds of Bethlehem. The Bible says that God's message of Christ's birth was first given to these shepherds. Why? What was so special about these shepherds? Is God always so selective? What does that mean for our lives of faith?

Dec. 20th – The Bethlehem Shepherds (Part 1)

Luke 2:8-20

Dec. 27th – The Bethlehem Shepherds (Part 2)

Luke 2:8-20

Would you like a visit from Pastor John?

Or, do you know someone who would?

Please contact him at 724-872-7414 (office) or 606-261-0232 (cell).

Why Do Christians Celebrate Advent?

Celebrating Advent involves spending time in spiritual preparation for the coming of Jesus Christ at Christmas. In Western Christianity, the season of Advent begins on the fourth Sunday prior to Christmas Day, or the Sunday which falls closest to November 30, and lasts through Christmas Eve, or December 24.

What Is Advent?



Tatjana Kaufmann / Getty Images

Advent is a period of spiritual preparation in which many Christians make themselves ready for the coming, or birth of the Lord, [Jesus Christ](#). Many [Christians](#) celebrate Advent not only by thanking God for Christ's first coming to Earth as a baby, but also for his presence among us today through the [Holy Spirit](#), and in preparation and anticipation of his final coming at the end of time.

Definition of Advent

The word "advent" comes from the Latin "adventus" meaning "arrival" or "coming," particularly of something having great importance.

The Time of Advent

For denominations that celebrate Advent, it marks the beginning of the church year.

In Western Christianity, Advent begins on the fourth Sunday before [Christmas](#) Day, or the Sunday which falls closest to November 30, and lasts through Christmas Eve, or December 24. When Christmas Eve falls on a Sunday, it is the last or fourth Sunday of Advent.

For [Eastern Orthodox](#) churches which use the Julian calendar, Advent begins earlier, on November 15, and lasts 40 days rather than four weeks. Advent is also known as the [Nativity](#) Fast in Orthodox Christianity.

Origins of Advent

According to the [Catholic Encyclopedia](#), Advent began sometime after the 4th century as a time of preparation for [Epiphany](#), and not in anticipation of Christmas. Epiphany celebrates the manifestation of Christ by remembering the visit of the [wise men](#) and, in some traditions, the [Baptism of Jesus](#). At this time new Christians were [baptized](#) and received into the faith, and so the early church instituted a 40-day period of fasting and repentance.

Later, in the 6th century, St. Gregory the Great was the first to associate this season of Advent with the coming of Christ. Originally it was not the coming of the Christ-child that was anticipated, but the [Second Coming of Christ](#).

By the Middle Ages, the church had extended the celebration of Advent to include the coming of Christ through [his birth](#) in Bethlehem, his future coming at the end of time, and his presence among us through the promised [Holy Spirit](#). Modern-day Advent services include symbolic customs related to all three of these "advents" of Christ.



Meals-on-Wheels

Our church participates in delivery duties, every 5 to 6 weeks, on a rotating schedule, organized by the West Newton Association of Churches and the West Newton Senior Center.

Future week to note on your calendar: **Dec 18**

Thank you for your willingness to take part in this ministry.

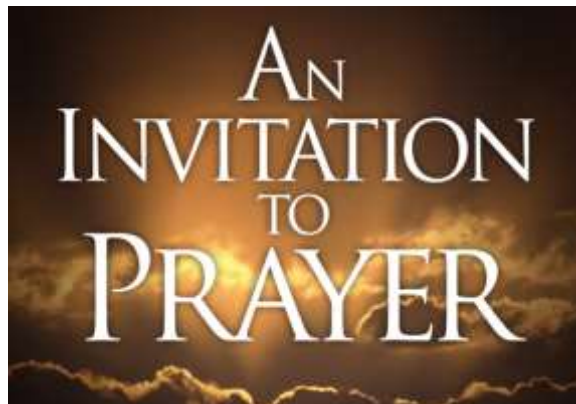
The sign-up sheets are in the church office hallway.

~~~~~



**Coffee Fellowship Hour usually takes place following worship, on the second Sunday of every month, in our social room.**

Hosts and Hostesses are needed  
sign up in the Church Kitchen for future months  
or Please see Anne Hustwit or Karen Murray



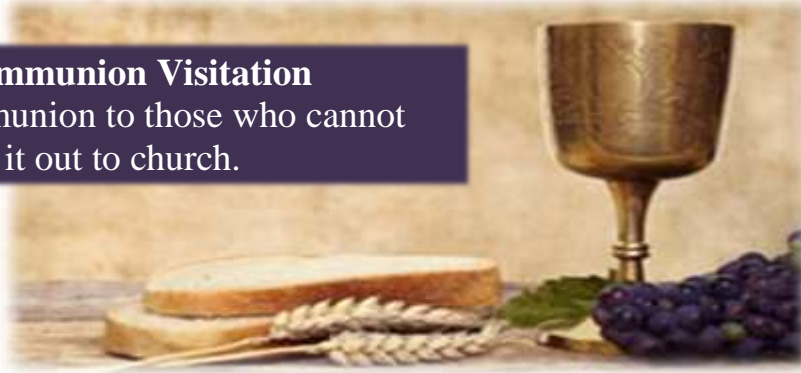
### **Need a quiet moment to get away and pray?**

The prayer room, under the bell tower, off the narthex, is available. Do you need someone to pray with?  
Contact Pastor John or an Elder of the church.





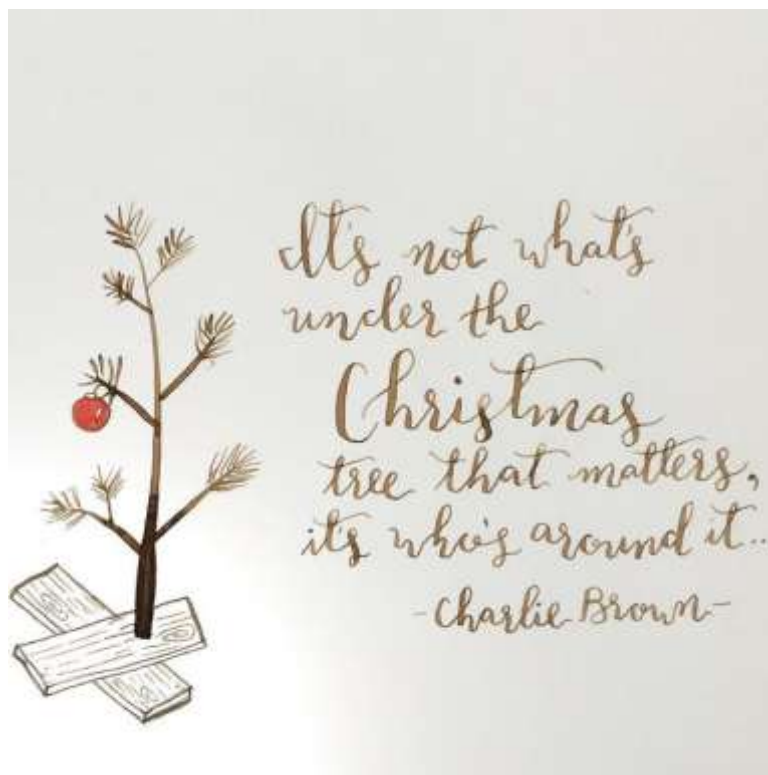
**Home Communion Visitation**  
teams take communion to those who cannot  
make it out to church.



## Chancel Choir

meet on Thursday evenings,  
during the school year,  
and participate in Sunday morning  
worship services at 10:00.

*Contact Jim Sykes to get involved.*





## OUR SESSION

Clerk of Session: Kris Edwards

### Class of 2017

Bob Bojarski  
Anne Hustwit  
Linda Shoaf  
Meri Beth Wees

### Class of 2018

Mark Barnes  
Jo Lynn Lowanse  
Diane Ozegovich  
Chuck Yelich

### Class of 2019

Greg Franks  
Marcia Harris  
Amanda McMinn  
Karen Murray

*Please support them  
with your prayers and participation.*



**West Newton Community Singers**

**Perform their annual Christmas  
Concert entitled "The Magic of  
Christmas"**

**Friday, Dec. 8<sup>th</sup> at 7:30 p.m.**

**Advance tickets \$6.00**

**\$7.00 at the door**

**\$3.00 student tickets**

**Tickets can be purchased from any  
member.**



|                 | ATTENDANCE    | ATTENDANCE      | ATTENDANCE   |                 |
|-----------------|---------------|-----------------|--------------|-----------------|
| <u>November</u> | <u>adults</u> | <u>children</u> | <u>total</u> | <u>OFFERING</u> |
| 5th             | 97            | 12              | <b>109</b>   | \$4,032.00      |
| 12th            | 89            | 13              | <b>102</b>   | \$3,498.00      |
| 19th            | 103           | 9               | <b>112</b>   | \$4,961.00      |
| 26th            | 87            | 6               | <b>93</b>    | \$2,422.00      |

**4 week Total \$14,913.00**

## **Contribution Envelopes for 2018**

Look for your new booklet of Contribution Envelopes for 2018 on the table in the narthex on Sunday, December 17. If you presently are not receiving envelopes and would like to, please contact Denise in the Church Office or see Linda Blick, Financial Secretary. Also, if you have envelopes and choose not to use them, let us know and we will not assign you an envelope number, but a higher number in our computer database for your contributions. If you are making any contributions to the church and you desire a statement at the end of the year, you must put your name on a giving envelope available in the pew racks, if cash, or give with a check.

## **Consecration Sunday**

Pledges made on the "Estimated Giving" card for 2018 have totaled \$80,284. It's not too late to turn in your pledge if you haven't done so. Place it in the offering place to mail it to the church office.



## **DOES OUR CHURCH REALLY NEED A SECURITY PLAN?**

Thirty percent (30%) of all churches experienced a threat or other emergency in 2015. Seventy-five percent (75%) of all churches had no security plan in place. (Source: Christian Security Network ) Simply put, all churches must be prepared for a variety of threats and emergencies. Whether we like it or not, times change, views about the church change, threats to the church change, and perhaps most importantly, people and their motives in this world change.

### **The Basic Church Security Conflict**

There are always two sides to everything. Granted, it can be difficult to convince a church for the need to worry about security. The perspective of the WNUPC Session is to be proactive and not reactive. Some of the most common questions are: Won't God protect us if we are in His house? Why not just rely on local police in case of an emergency? Won't congregants think that a security plan is really not needed? It is not practical to erect metal detectors at all entrances, so how can we be secure?

The reality is that most local police have widely varying response times due to being overwhelmed with calls and fewer officers. In times of an emergency, you cannot count on police being able to be there in a timely manner, as seen in recent incidents involving churches and other institutions.

In June, Pastor John, commissioned by the Session, met with Lt. Gonglik from the Pennsylvania State Police. He performed a walk-through inspection of the church building and offered many things for Session to consider in terms of safety and security. Of course, many of the suggestions involved changes, upgrades, and additions to the building which ultimately means expenditure of dollars. With all this said, the Session will continue to discuss and implement safety measures as is most appropriate as time goes forward.

The following are safety and security steps approved and implemented thus far:

1. Cameras installed throughout the building. Two cameras are awaiting installation in the parking lot and cannot be installed until approval is received from West Penn. West Penn owns the utility pole, which has the only source of power needed to operate the cameras. Video from the parking lot cameras (once installed) will be transmitted to the recording device in the church office wirelessly. There have been various illegal activities occurring in our parking lot observed by Pastor John and other church members. If we are seeing only a few incidents, the real question to consider is how much are we not seeing even though it may well be occurring?
2. Superior Security Systems which installed the cameras will also set up access to view all camera video for 2 smartphones. This will provide 24/7 visual acknowledgment of the parking lot and church building.
3. During the week and normal church office hours (8:30-1:30), all doors will remain locked. Access for the public will be only through the 4<sup>th</sup> street door. Any events or functions throughout the week (day or evening) should be closely monitored for as few of access points as possible to the building. Example – choir practices on Thursday. A few minutes after the scheduled start time, the front doors should be locked for the remainder of the choir practice.
4. Every Sunday during worship, shortly after we begin the service but no later than 10:15, all doors will be locked. Exit through these doors is still possible. This limits access to the church to the front doors off of Main Street. Session members will be scheduled each week to remain by the front doors in the event any late arrivals occur.
5. Parking Lot. There has been an increased amount of unwanted activity in our lot. As a result, signs indicating video\cameras are there and parking by permit only have been installed. Any towing of vehicles without a permit will only occur if initiated by the church. There will be NO random drive by from any towing company. Parking passes are available to any church member or regular attendee. Obviously, this does not guarantee a spot to park in our lot given the limited number of spaces. Session has approved the continuation of parking by PNC employees during the weekdays as a favor in return for allowing us to park in the bank lot every Sunday. Bank employees have been issued a parking permit.

While we may, each in our own way, struggle with having to institute such measures at our church, it is the hope that everyone will understand the intention is to make your time while participating in the life of the church and all activities as safe and secure as possible. Thank you.



## **November 2017 Session Highlights**

- Opened with Scripture reading, followed by Prayer.
- Moderator: Rev. John Manon
- Present:      Linda Shoaf              Jo Lynn Lowanse      Marica Harris      Greg Franks  
                    Meri Beth Wees      Robert Bojarski      Diane Ozegovich      Karen Murray  
                    Amanda McMinn      Kris Edwards      Anne Hustwit
- Absent: Chuck Yelich, Mark Barnes

### **Highlights:**

- Approved communion on Sunday, Dec. 3<sup>rd</sup> to be done by intinction
- Approved bringing Young Disciples back to the sanctuary to receive communion. During their class time, the Young Disciples will be taught about the sacrament
- Approved Christmas luncheon to be held on Sunday, Dec. 10 immediately after worship
- Approved 2018 operating budget
- Approved the creation of Office of Deacons. There will be 5 Deacons. Session members will be asking for those willing to serve in this role and approve Deacons at the December meeting
- Approved Christmas Eve services as follows: 10:00 a.m. regular Sunday worship and 7:00 p.m. Candlelight service
- Approved removal of Mary Popovich as a member upon her request
- Approved moving Harry Glaser from inactive member status to active member status
- Received update on installation of security cameras for parking lot. Request was denied to mount cameras on utility pole which is owned by West Penn Power. An appeal to West Penn has been made
- Approved the following security measures:
  - After beginning of worship (by 10:15) all doors will be locked. Only entrance will be from Main Street
  - Session members will rotate on a schedule to lock doors
- Next Session Meeting will be December 17, 2017 at 5:00 p.m.
- Closed with prayer





Poinsettia  
orders are available until Dec. 3<sup>rd</sup>.

Colors: Red, white, pink, marble

Cost: 6" - \$8.50

8" - \$16.50

10" - \$25.00

Call the office to place your order.



WNUPC

@WestNewtonUPC



## **Reverse Advent Calendar Food Box**



**This idea is very simple – “it’s better to give than to receive.”**

**A typical Advent calendar is used to celebrate the coming of Jesus as a baby. Matthew 1:21, “She will give birth to a son, and you are to give him the name Jesus, because he will save his people from their sins.” In the weeks before Christmas, we watch, wait, and prepare for the greatest gift ever given. Each year we embark on a journey remembering this divine gift and how that gift touches our life each day.**

**With a humble spirit of giving and service to others, with this reverse Advent food box, place a food item (non-perishable) into your box each day and say a prayer thanking God for the gift of Jesus Christ, and also for those who are hungry in our community. As the end of Advent (Christmas Eve), bring your box to worship with you. All the good collected will be donated to area food banks.**





## **Christmas Cards for the Military**

You are invited to write Christmas cards to be delivered to veterans in hospitals in the Pittsburgh area. Cards are available at the church.

## **College Care Packages**

The Christian Ed. Committee thanks everyone who gave donations for the care packages for our college students.

## **Advent Devotional**

The 2017 Advent devotional was e-mailed to those on our list. Hard copies are available at the church for those without computer access.

## **Bell Ringers Needed!!**

Please support the Salvation Army's Red Kettle Campaign and sign up for a time slot to ring the bell at the West Newton Giant Eagle on Dec. 16<sup>th</sup>. Funds collected in this kettle help local families needing support and is all the money we get to serve the community for an entire year! The sign-up sheet is on the bulletin board across from the office.



Many thanks to everyone in our congregation who participated in the parade on Sat. Nov. 25. Adults dressed as Nativity characters and children dressed as animals, rode on the church float and threw candy to the crowd. Also, thanks to all who donated in any way to the success of this event.





## Christmas Cards for Shut-in's

Brighten the holidays for those who can't get out. Add them to your Christmas card list, letting them know you are thinking of them. This is a list of shut-ins from our congregation.



Elmer & Bea Bassler  
Redstone Highlands  
12921 Redstone Drive  
North Huntingdon, PA 15642

Margaret Edwards  
Westmoreland Manor  
2480 S. Grande Blvd.  
Greensburg, PA 15601

Verna Seliy  
Hempfield Manor, Room 22  
1118 Woodward Dr.  
Greensburg, PA 15601

Doris Markle  
661 Mt. Pleasant Road  
West Newton, PA 15089

Ester Hanna  
380 Wray Large Road  
Jefferson Hills, PA 15025

Vivian Blick  
901 Redmont Place  
Greensburg, PA 15601

Rev. Andrew Slade  
Redstone Highlands  
12921 Redstone Drive, Apt. 346  
North Huntingdon, PA 15642

Ed & Louise Landini  
Redstone Highlands  
12921 Redstone Drive, Apt. 106  
North Huntingdon, PA 15642

Joe & Mary Parker  
2147 Lake View Dr.  
Belle Vernon, PA 15012

Sara Kay Fenton  
4043 Briarwood Dr.  
Jeannette, PA 15644



## WNUPC Prayer List

Beginning on November 1<sup>st</sup>, Session will launch a new prayer list for our church family. In the recognition of prayer for our family being a powerful, effective, and foundational element of faith, the Session has approved the guidelines that are detailed below:

### WNUPC Prayer List Guidelines

Prayer is an essential element to a healthy life of faith for individuals and congregations. In fact, we are commanded to pray for one another in times of need. Ephesians 6:18, *“Pray in the Spirit on all occasions with all kinds of prayers and requests. With this in mind, be alert and always keep on praying for all the saints.”*

With acknowledgment that prayer is a key element to our faith, it is our desire to balance the command to pray with personal privacy and respect for all. Therefore, the following guidelines will be used to make our church’s prayer list an effective tool in expressing our faith.

1. The prayer list will be coordinated and operated through the church office.
2. Ways to submit prayer requests:
  - A. Website (wnupc.com) – click on the “CONTACT US” button.
  - B. E-mail – Church office, [wnupc@verizon.net](mailto:wnupc@verizon.net)  
Pastor, [manon.john474@gmail.com](mailto:manon.john474@gmail.com)
  - C. Phone – 724-872-7414 (church office)  
606-261-0232 (Pastor John)
  - D. Text message – 606-261-0232 (Pastor John)
  - E. Worship – fill out the orange prayer request card in pews
3. Prayer requests will remain on the list for 30 days.
  - requests may be updated and remain on the list for an additional 30 days.
  - if no updates are made, the request will be removed after 30 days.
4. Since this is our church’s prayer list, please submit requests for immediate family of members, regular visitors, church staff, Presbytery and/or PCUSA specific issues. (immediate family= spouse, children, grandchildren, mom, dad, brother and sister)
5. Specific items will remain on the list indefinitely such as: our church, Pastor and family, our country, our military, Session and community.
6. List will contain names of people only. There will be no specific information, medical diagnosis, procedures, etc.
7. List will be distributed weekly in the following ways:
  - email (must complete form to receive prayer list)
  - monthly newsletter
  - bulletin



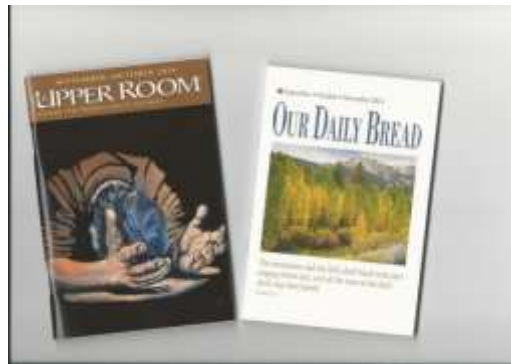


**2017**

**Chancel Flowers  
can now be ordered**

**Please sign up on the bulletin board  
across from the office.**

**All orders must be paid in advance (\$35)  
or your flowers will not be ordered.**



*In addition to the many ministries that are available here at WNUPC; like Sunday school, Bible study, and PW functions, we wish for you to continue your daily walk with the Lord in a time of prayer. To that end, we offer these free daily devotionals. Look for them on the table near the church office or in the racks in the main-entrance narthex of the church.*



**Mobility issues  
holding you back???**

**Wheelchairs and Walkers** are available, on both levels of the church, as well as a **chair-lift** on the hall stairs. There is also a **ramp entryway** on 4<sup>th</sup> Street, through the chapel.





## BIRTHDAYS IN DECEMBER

|                 |      |
|-----------------|------|
| Greg Franks     | 1st  |
| Merle Johnson   | 2nd  |
| Kirk Brown III  | 3rd  |
| Tori Martinelli | 3rd  |
| Linda Blick     | 5th  |
| Harry Sann      | 7th  |
| Nathan Bojarski | 10th |
| Annetta Carney  | 10th |
| Diane Mauk      | 12th |
| Tom Derr        | 13th |
| Michael Puskar  | 14th |
| James Oblack    | 15th |
| Bob Dave        | 15th |
| Clyde Frabizio  | 22nd |
| Meri Beth Wees  | 25th |
| Pat Blevins     | 29th |
| Verna Seily     | 29th |
| Louise Landini  | 31st |
| Lois Barnes     | 31st |
| Nolan Franks    | 31st |
| Alyson Hoak     | 31st |



## ANNIVERSARIES IN DECEMBER

|                        |      |
|------------------------|------|
| Terry & Karen Peto     | 17th |
| Michael & Kim Puskar   | 18th |
| Jason & Suzanne Mesher | 20th |
| Tom & Sandy Berch      | 29th |

We would love to  
announce and celebrate  
your wedding anniversary...  
but, we need to know when it is...

Deadline for updates and notices for the January publication of *The Higher Ground Herald* will be **Wednesday, Dec. 20**

Contact the church office  
by phone at 724-872-7414 or email at [wnupc@verizon.net](mailto:wnupc@verizon.net)



## Looking Forward at WNUPC

|           |         |                      |                                               |
|-----------|---------|----------------------|-----------------------------------------------|
| Sunday    | Dec. 3  | 8:45 a.m.            | Adult Bible Study ~ McKee Room                |
|           |         | 10:00 a.m.           | Worship w/communion~ Sanctuary                |
|           |         | Following worship    | Home Communion Team departs                   |
| Monday    | Dec. 4  | 7:00 p.m.            | Dartball ~ Social Room                        |
| Wednesday | Dec. 6  | 12:00 p.m.           | WNPW Holiday Gathering ~ Social Room          |
|           |         | 6:00 p.m.            | Disciple Bible Study ~ Social Room            |
| Thursday  | Dec. 7  | 7:00 p.m.            | Chancel Choir Rehearsal                       |
| Friday    | Dec. 8  | 7:30 p.m.            | WN Community Singers Concert ~ Sanctuary      |
| Sunday    | Dec. 10 | 8:45 a.m.            | Adult Bible Study ~ McKee Room                |
|           |         | 10:00 a.m.           | Worship ~ Sanctuary                           |
|           |         | Following worship    | Christmas Dinner ~ Social Room                |
| Wednesday | Dec. 13 | 6:00 p.m.            | Disciple Bible Study ~ Social Room            |
| Thursday  | Dec. 14 | 10:00 a.m.           | WNAC Meeting @ Christ Lutheran Church         |
| Saturday  | Dec. 16 | 10:00 a.m.-4:00 p.m. | Bell Ringing at WN Giant Eagle                |
| Sunday    | Dec. 17 | 8:45 a.m.            | Adult Bible Study ~ McKee Room                |
|           |         | 10:00 a.m.           | Worship ~ Sanctuary                           |
|           |         | 5:00 p.m.            | Session Meeting ~ McKee Room                  |
| Monday    | Dec. 18 | 10:00 a.m.           | Meals on Wheels @ WN Senior Center            |
| Tuesday   | Dec. 19 | 10:00 a.m.           | Meals on Wheels @ WN Senior Center            |
| Wednesday | Dec. 20 | 6:00 p.m.            | Disciple Bible Study ~ Social Room            |
| Thursday  | Dec. 21 | 10:00 a.m.           | Meals on Wheels @ WN Senior Center            |
|           |         | 7:00 p.m.            | Chancel Choir Rehearsal                       |
| Friday    | Dec. 22 | 10:00 a.m.           | Meals on Wheels @ WN Senior Center            |
| Sunday    | Dec. 24 | 8:45 a.m.            | Adult Bible Study ~ McKee Room                |
|           |         | 10:00 a.m.           | Worship ~ Sanctuary                           |
|           |         | 7:00 p.m.            | Christmas Eve Candlelight Service ~ Sanctuary |
| Monday    | Dec. 25 | ALL DAY              | Office Closed                                 |
| Wednesday | Dec. 27 | 2:00 p.m.            | Lessons & Carols & Redstone Highlands         |
|           |         | 6:00 p.m.            | Disciple Bible Study ~ Social Room            |
| Thursday  | Dec. 28 | 7:00 p.m.            | Chancel Choir Rehearsal                       |
| Sunday    | Dec. 31 | 8:45 a.m.            | Adult Bible Study ~ McKee Room                |
|           |         | 10:00 a.m.           | Worship ~ Sanctuary                           |